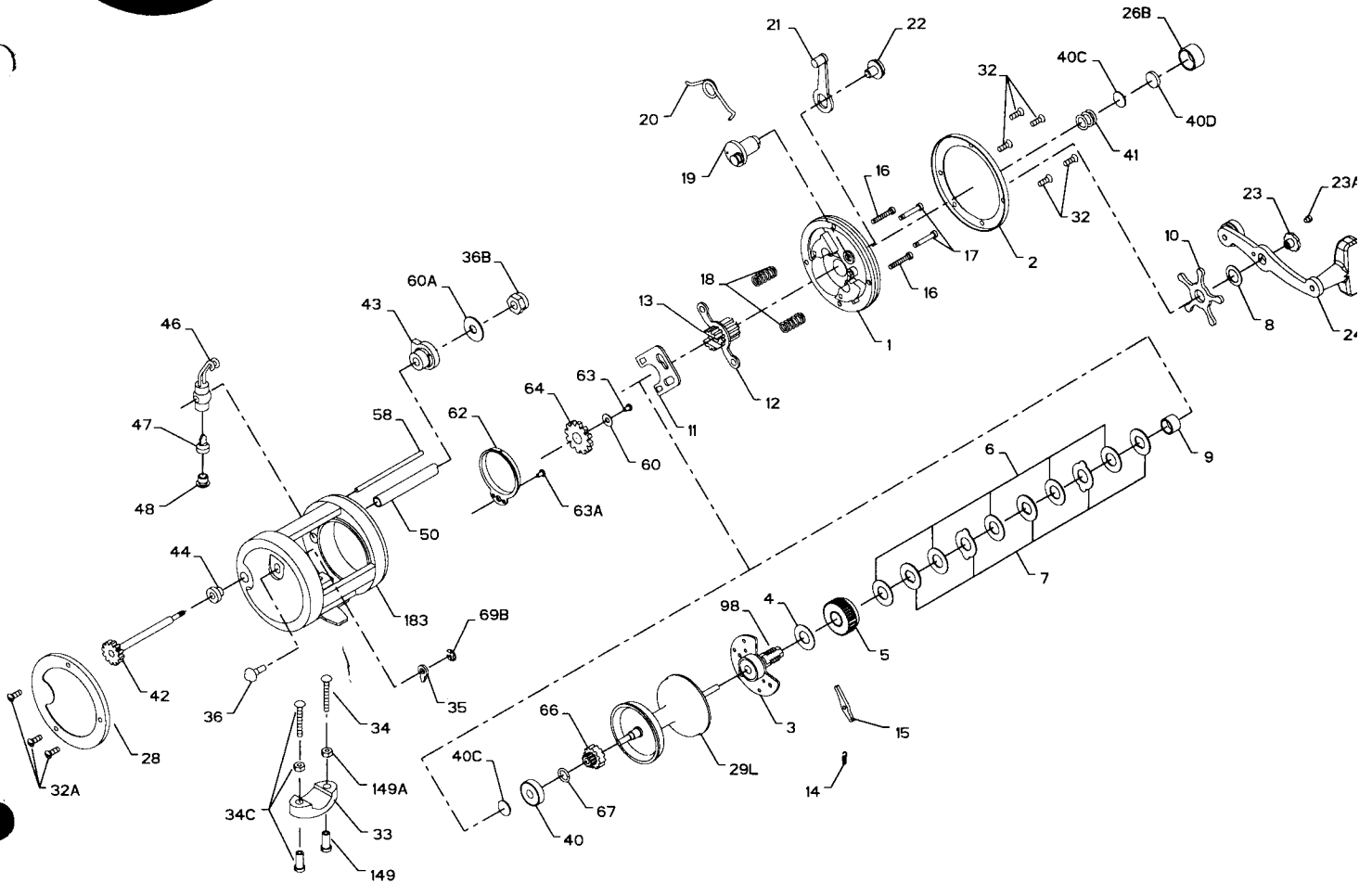




PARTS AND PRICE LIST FOR MODEL 330GTI LEVEL WIND



Key No.	Part No.	Description	Price	Key No.	Part No.	Description	Price
1	1-330	Right Side Plate	\$9.45	33R	*33R-200	Ringed Rod Clamp (Optional)	\$6.25
2	2-330	Right Side Ring	6.10	34	34-45	Clamp Screw Only90
3	3-330	Bridge Assembly	21.00	34C	34C-45	Clamp Screw w/Nuts	2.25
4	4-349	Fiber Washer40	35	35-320	Click Tongue	1.10
5	5-320	Main Gear	6.00	36	36-320	Click Button95
6	6-320	Friction Drag Washer (5 req.) ...	1.05	36B	36-700	Worm Shaft Nut80
7	7C-970	Metal Drag Washer (Set of 5) ...	3.70	40	40-320	Ball Bearing	10.60
8	8-349	Tension Spring90	40C	40C-320	Metal Thrust Washer (2 req.)40
9	9-320	Spacing Sleeve	1.90	40D	40D-320	Rubber Thrust Washer40
10	10-349	Star Drag	4.40	41	41-330	Right Side Thrust Spring45
11	11-330	Eccentric Jack	1.25	42	42-330N	Worm	4.90
12	12-60	Pinion Yoke90	43	43-320	Right Side Worm Bearing	1.05
13	13-330	Pinion Gear	3.50	44	44-320	Left Side Worm Bearing	1.05
14	14-330	Dog Spring45	46	46-330N	Line Guide Carriage	5.40
15	15-330	Dog	1.05	47	47-320	Pawl	1.35
16	16-113H	Lower Bridge Screw (2 req.)40	48	48-330N	Pawl Cover Screw95
17	17-113H	Upper Bridge Screw (2 req.)40	50	50-330	Worm Shield	2.25
18	18-60	Clutch Spring (2 req.)40	58	58-330	Line Guide Post	1.65
19	19-330	Eccentric Cam	1.90	60	60-320	Idler Gear Washer40
20	20-155	Eccentric Spring40	60A	60-320	Idler Gear Washer40
21	21-309	Eccentric Lever Assembly	1.70	62	62M-209	Click Spring	1.50
22	22-60	Eccentric Screw50	63	63-500S	Idler Gear Screw80
23	23-114	Handle Assembly Screw	2.65	63A	63-330	Click Spring Screw80
23A	110-60	Handle Lock Screw40	64	64-330	Idler Gear	1.35
24	24-330	Handle Assembly	8.80	66	66-320	Spool Gear Click Ratchet	1.60
26B	26B-320	Spool Tension Control Cap	1.75	67	67-9	Spool Gear Lock Ring40
28	28-330	Left Side Ring	6.40	69B	69B-600	Retaining Ring Click Button90
29L	29L-330	Aluminum Spool	14.90	98	98-320	Gear Sleeve	5.00
32	32-17	R.S. Plate Screw (5 req.)40	149	149-45	Clamp Nut Only90
32A	32-310	L.S. Ring Screw (3 req.)50	149A	149-200	Hex Nut Only45
33	33-200	Rod Clamp	4.00	183	183-330	Frame	28.40

*Not Shown